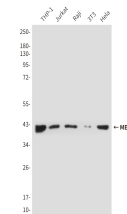


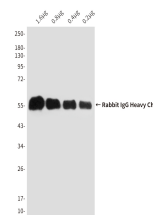
## Product Datasheet

### Rabbit IgG Antibody (orb1563302)

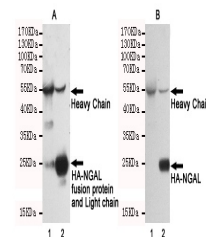
<b>Description</b>	Rabbit IgG Antibody
<b>Species/Host</b>	Mouse
<b>Reactivity</b>	Rabbit
<b>Conjugation</b>	Unconjugated
<b>Tested Applications</b>	ELISA, WB
<b>Immunogen</b>	Rabbit IgG
<b>Target</b>	Rabbit IgG
<b>Preservatives</b>	Liquid in PBS containing 50% glycerol, 0.5% rAlbumin and 0.02% sodium azide, pH 7.3.
<b>Form/Appearance</b>	Liquid
<b>Concentration</b>	5.85 mg/ml
<b>Storage</b>	Maintain refrigerated at 2-8°C for up to 2 weeks. For long term storage store at -20°C in small aliquots to prevent freeze-thaw cycles.
<b>Note</b>	For research use only
<b>Isotype</b>	IgG1
<b>Clonality</b>	Monoclonal
<b>MW</b>	Calculated MW: 55,25 kDa; Observed MW: 55,25 kDa
<b>Dilution Range</b>	WB: 1/500-1/1000 ELISA: 1/10000
<b>Expiration Date</b>	12 months from date of receipt.



Western blot analysis of MEK2 in THP-1, ...



Western blot analysis of Rabbit IgG (5B2...)



Immunoprecipitation analysis of Rabbit I...