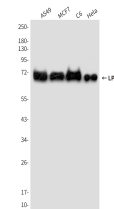


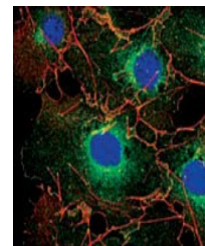
Product Datasheet

LPP Antibody (orb1563266)

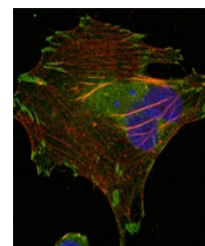
Description	LPP Antibody
Species/Host	Mouse
Reactivity	Hamster, Human, Monkey, Mouse, Rat
Conjugation	Unconjugated
Tested Applications	ICC, IHC-Fr, IHC-P, IP, WB
Immunogen	Purified recombinant fragment of human LPP expressed in E. Coli.
Target	LPP
Preservatives	Liquid in PBS containing 50% glycerol, 0.5% rAlbumin and 0.02% sodium azide, pH 7.3.
Form/Appearance	Liquid
Concentration	1 mg/ml
Storage	Maintain refrigerated at 2-8°C for up to 2 weeks. For long term storage store at -20°C in small aliquots to prevent freeze-thaw cycles.
Note	For research use only
Isotype	IgG1
Clonality	Monoclonal
MW	Calculated MW: 66 kDa; Observed MW: 66 kDa
Uniprot ID	Q93052
Dilution Range	WB: 1/500-1/1000 IHC: 1/50-1/100 IF: 1/50-1/200 IP: 1/20
Expiration Date	12 months from date of receipt.



Western blot analysis of LPP in A549, MC...



Immunofluorescence analysis of LPP (6F6)...



Immunofluorescence analysis of LPP (6F6)...