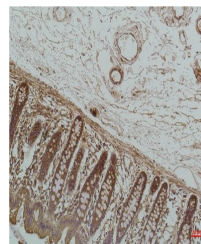


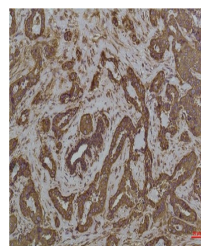
Product Datasheet

HSPA5 Antibody (orb1563215)

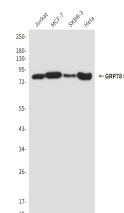
Description	HSPA5 Antibody
Species/Host	Mouse
Reactivity	Human, Mouse, Rat
Conjugation	Unconjugated
Tested Applications	IHC-P, WB
Immunogen	Synthetic peptide conjugated to KLH.
Target	HSPA5
Preservatives	Liquid in PBS containing 50% glycerol, 0.5% rAlbumin and 0.02% sodium azide, pH 7.3.
Form/Appearance	Liquid
Concentration	1 mg/ml
Storage	Maintain refrigerated at 2-8°C for up to 2 weeks. For long term storage store at -20°C in small aliquots to prevent freeze-thaw cycles.
Note	For research use only
Isotype	IgG1
Clonality	Monoclonal
MW	Calculated MW: 72 kDa; Observed MW: 78 kDa
Uniprot ID	P11021
Dilution Range	WB: 1/500-1/1000 IHC: 1/50-1/100
Expiration Date	12 months from date of receipt.



Immunohistochemistry analysis of paraffin...



Immunohistochemical analysis of paraffin...



Western blot analysis of GRP78 BiP (6H7)...