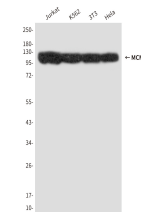


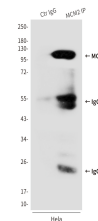
Product Datasheet

MCM2 Antibody (orb1563145)

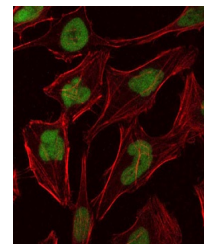
Description	MCM2 Antibody
Species/Host	Mouse
Reactivity	Human, Mouse
Conjugation	Unconjugated
Tested Applications	FC, ICC, IHC-Fr, IHC-P, IP, WB
Immunogen	Purified recombinant fragment of human MCM2 expressed in E. Coli.
Target	MCM2
Preservatives	Liquid in PBS containing 50% glycerol, 0.5% rAlbumin and 0.02% sodium azide, pH 7.3.
Form/Appearance	Liquid
Concentration	1 mg/ml
Storage	Maintain refrigerated at 2-8°C for up to 2 weeks. For long term storage store at -20°C in small aliquots to prevent freeze-thaw cycles.
Note	For research use only
Isotype	IgG1
Clonality	Monoclonal
MW	Calculated MW: 102 kDa; Observed MW: 125 kDa
Uniprot ID	P49736
Dilution Range	WB: 1/500-1/1000 IHC: 1/50-1/100 IF: 1/50-1/200 IP: 1/20 FC: 1/50-1/100
Expiration Date	12 months from date of receipt.



Western blot analysis of MCM2 in Jurkat...



Immunoprecipitation analysis of MCM2 (2B...



Immunofluorescence analysis of MCM2 (2B5...