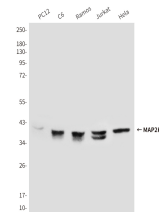


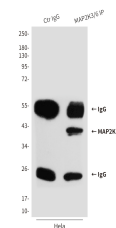
Product Datasheet

MAP2K6 Antibody (orb1563139)

Description	MAP2K6 Antibody
Species/Host	Mouse
Reactivity	Human, Rat
Conjugation	Unconjugated
Tested Applications	IP, WB
Immunogen	Purified recombinant human MKK6 protein fragments expressed in E.coli.
Target	MAP2K6
Preservatives	Liquid in PBS containing 50% glycerol, 0.5% rAlbumin and 0.02% sodium azide, pH 7.3.
Form/Appearance	Liquid
Concentration	3.2 mg/ml
Storage	Maintain refrigerated at 2-8°C for up to 2 weeks. For long term storage store at -20°C in small aliquots to prevent freeze-thaw cycles.
Note	For research use only
Isotype	IgG1
Clonality	Monoclonal
MW	Calculated MW: 37 kDa; Observed MW: 40 kDa
Uniprot ID	P52564
Dilution Range	WB: 1/500-1/1000 IP: 1/20
Expiration Date	12 months from date of receipt.



Western blot analysis of MAP2K6 (8A11) i...



Immunoprecipitation analysis of MAP2K6 (...)