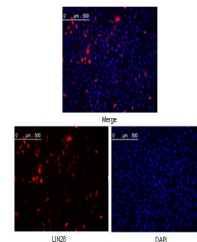


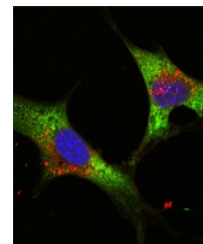
Product Datasheet

LIN28A Antibody (orb1563137)

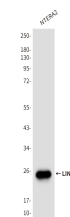
Description	LIN28A Antibody
Species/Host	Mouse
Reactivity	Human
Conjugation	Unconjugated
Tested Applications	ICC, WB
Immunogen	Purified recombinant fragment of LIN28 expressed in E. Coli.
Target	LIN28A
Preservatives	Liquid in PBS containing 50% glycerol, 0.5% rAlbumin and 0.02% sodium azide, pH 7.3.
Form/Appearance	Liquid
Concentration	1 mg/ml
Storage	Maintain refrigerated at 2-8°C for up to 2 weeks. For long term storage store at -20°C in small aliquots to prevent freeze-thaw cycles.
Note	For research use only
Isotype	IgG1
Clonality	Monoclonal
MW	Calculated MW: 23 kDa; Observed MW: 23 kDa
Uniprot ID	Q9H9Z2
Dilution Range	WB: 1/500-1/1000 IF: 1/50-1/200
Expiration Date	12 months from date of receipt.



Immunofluorescence analysis of LIN28A (9G2) in...



Immunofluorescence analysis of LIN28A (9G2) in...



Western blot analysis of LIN28A (9G2) in...