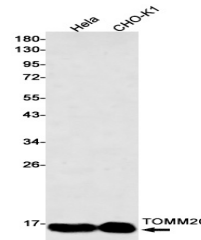


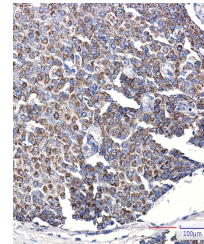
Product Datasheet

TOMM20 Antibody (orb1563033)

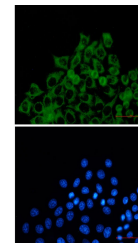
Description	TOMM20 Antibody
Species/Host	Rabbit
Reactivity	Hamster, Human
Conjugation	Unconjugated
Tested Applications	ICC, IHC-Fr, IHC-P, WB
Immunogen	Recombinant protein of human TOMM20
Target	TOMM20
Preservatives	50mM Tris-Glycine(pH 7.4), 0.15M NaCl, 40% Glycerol, 0.01% Sodium azide and 0.05% rAlbumin
Form/Appearance	Liquid
Concentration	0.3 mg/ml
Storage	Maintain refrigerated at 2-8°C for up to 2 weeks. For long term storage store at -20°C in small aliquots to prevent freeze-thaw cycles.
Note	For research use only
Isotype	IgG
Clonality	Monoclonal
MW	Calculated MW: 16 kDa; Observed MW: 16 kDa
Uniprot ID	Q15388
Dilution Range	WB: 1/500-1/1000 IHC: 1/50-1/100 IF: 1/50-1/200
Expiration Date	12 months from date of receipt.



Western blot analysis of TOMM20 in HeLa,...



Immunohistochemistry analysis of paraffi...



Immunocytochemistry analysis of TOMM2 (g...