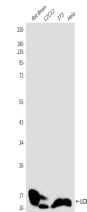


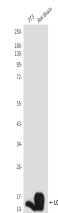
Product Datasheet

MAP1LC3A/MAP1LC3B Antibody (orb1562963)

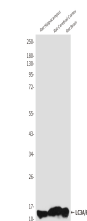
Description	MAP1LC3A/MAP1LC3B Antibody
Species/Host	Rabbit
Reactivity	Human, Mouse, Rat
Conjugation	Unconjugated
Tested Applications	WB
Immunogen	Synthetic peptide.
Target	MAP1LC3A/MAP1LC3B
Preservatives	Liquid in PBS containing 50% glycerol, 0.5% rAlbumin and 0.02% sodium azide, pH 7.3.
Form/Appearance	Liquid
Concentration	1.877 mg/ml
Storage	Maintain refrigerated at 2-8°C for up to 2 weeks. For long term storage store at -20°C in small aliquots to prevent freeze-thaw cycles.
Note	For research use only
Isotype	IgG
Clonality	Polyclonal
MW	Calculated MW: 14 kDa; Observed MW: 14,16 kDa
Uniprot ID	Q9GZQ8 , Q9H492
Dilution Range	WB: 1/500-1/1000
Expiration Date	12 months from date of receipt.



Western blot analysis of LC3A/B in rat B...



Western blot analysis of LC3A/B in 3T3 a...



Western blot analysis of LC3A/B in rat H...