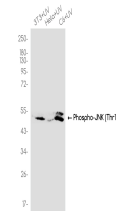


Product Datasheet

MAPK8/MAPK9/MAPK10 Antibody (orb1562918)

Description	MAPK8/MAPK9/MAPK10 Antibody
Species/Host	Rabbit
Reactivity	Human, Mouse, Rat
Conjugation	Unconjugated
Tested Applications	FC, ICC, IHC-P, IP, WB
Immunogen	A synthesized peptide derived from human Phospho-JNK1/2/3 (T183+T183+T221)
Target	MAPK8/MAPK9/MAPK10
Preservatives	Rabbit IgG in phosphate buffered saline , pH 7.4, 150mM NaCl, 0.02% sodium azide and 50% glycerol.
Form/Appearance	Liquid
Storage	Maintain refrigerated at 2-8°C for up to 2 weeks. For long term storage store at -20°C in small aliquots to prevent freeze-thaw cycles.
Note	For research use only
Isotype	IgG
Clonality	Monoclonal
MW	Calculated MW: 48 kDa; Observed MW: 46,54 kDa
Uniprot ID	P45983 , P45984 , P53779
Dilution Range	WB: 1/500-1/1000 IHC: 1/50-1/100 IF: 1/50-1/200 IP: 1/50 FC: 1/50-1/100
Expiration Date	12 months from date of receipt.



Western blot analysis of Phospho-JNK (Th...