

Product Datasheet

Anti-mCherry VHH antibody (orb1562797)

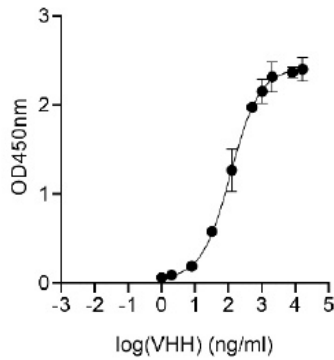
Description	Alpaca-derived anti-mCherry VHH single domain antibody (molecular weight: 14.3 kDa), expressed in E. coli under conditions free from animal-derived components.
Conjugation	Unconjugated
Tested Applications	ELISA, IF, WB
Preservatives	25 mM TAPS pH 8.5, 500 mM NaCl, 5 mM EDTA, 0.09 % NaN ₃
Form/Appearance	Liquid
Concentration	1mg/mL
Storage	4°C; Do not freeze.
Note	For research use only
Clone Number	RP55
Purity	> 95% as determined by SDS-PAGE
Source	E. coli
MW	15 kDa
Expiration Date	12 months from date of receipt.

Biorbyt Ltd.

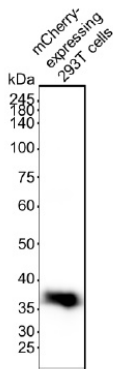
7 Signet Court, Swann's Road,
Cambridge, CB5 8LA, United Kingdom
Email: info@biorbyt.com, support@biorbyt.com
Phone: [+44 \(0\) 1223 859-353](tel:+44(0)1223859353) | Fax: [+1 \(415\) 651-8558](tel:+1(415)6518558)

Biorbyt LLC.

68 TW Alexander Drive,
Durham, NC, 27713, United States
Email: info@biorbyt.com, support@biorbyt.com
Phone: [+1 \(415\) 906-5211](tel:+1(415)9065211) | Fax: [+1 \(415\) 651-8558](tel:+1(415)6518558)



Line graph illustrates about the Ag-Ab reactions using different concentrations of antigen and serial dilutions of anti-mCherry VHH antibody



Western blot analysis of 293T cell lysates using anti-mCherry VHH antibody

Biorbyt Ltd.

7 Signet Court, Swann's Road,
Cambridge, CB5 8LA, United Kingdom
Email: info@biorbyt.com, support@biorbyt.com
Phone: [+44 \(0\) 1223 859-353](tel:+44(0)1223859353) | Fax: [+1 \(415\) 651-8558](tel:+1(415)6518558)

Biorbyt LLC.

68 TW Alexander Drive,
Durham, NC, 27713, United States
Email: info@biorbyt.com, support@biorbyt.com
Phone: [+1 \(415\) 906-5211](tel:+1(415)9065211) | Fax: [+1 \(415\) 651-8558](tel:+1(415)6518558)