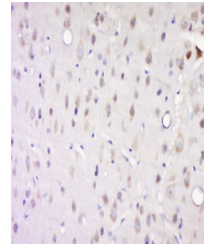


Product Datasheet

CK1 alpha(Phospho-Tyr294) antibody (orb156273)

Description	CK1 alpha(Phospho-Tyr294) antibody
Species/Host	Rabbit
Reactivity	Human, Rat
Conjugation	Unconjugated
Tested Applications	IF, IHC-Fr, IHC-P, WB
Immunogen	KLH conjugated synthesised phosphopeptide derived from human Caseine Kinase 1 alpha around the phosphorylation site of Tyr294 (YD(p-Y)TF)
Target	phospho-Caseine Kinase 1 alpha(Tyr294)
Preservatives	0.01M TBS(pH7.4) with 1% rAlbumin, 0.03% Proclin300 and 50% Glycerol.
Form/Appearance	Liquid
Concentration	1mg/ml
Storage	Shipped at 4°C. Store at -20 °C for one year. Avoid repeated freeze/thaw cycles.
Note	For research use only
Isotype	IgG
Clonality	Polyclonal
MW	39 kDa
Uniprot ID	P48729
Dilution Range	WB=1:500-2000, IHC-P=1:100-500, IHC-F=1:100-500, IF=1:100-500, ICC=1:100-500, ELISA=1:5000-10000
Expiration Date	12 months from date of receipt.



Immunohistochemical staining of rat brai...