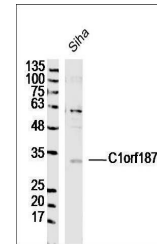


Product Datasheet

C1orf187 antibody (orb155930)

Description	C1orf187 antibody
Species/Host	Rabbit
Conjugation	Unconjugated
Tested Applications	ELISA, ICC, IF, IHC-Fr, IHC-P, WB
Immunogen	KLH conjugated synthetic peptide derived from human C1orf187 (251-349/349 aa)
Target	C1orf187
Preservatives	0.01M TBS(pH7.4) with 1% rAlbumin, 0.03% Proclin300 and 50% Glycerol.
Form/Appearance	Liquid
Concentration	1mg/ml
Storage	Shipped at 4°C. Store at -20 °C for one year. Avoid repeated freeze/thaw cycles.
Note	For research use only
Isotype	IgG
Clonality	Polyclonal
MW	36 kDa
Uniprot ID	Q8NBI3
Expiration Date	12 months from date of receipt.



Western blot analysis of Siha human cell...