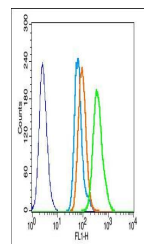


Product Datasheet

Brk (Phospho-Tyr447) antibody (orb155874)

Description	Brk (Phospho-Tyr447) antibody
Species/Host	Rabbit
Reactivity	Human
Conjugation	Unconjugated
Tested Applications	FC
Immunogen	KLH conjugated synthesised phosphopeptide derived from human Brk around the phosphorylation site of Tyr447 (TS(p-Y)EN)
Target	phospho-Brk (Tyr447)
Preservatives	0.01M TBS(pH7.4) with 1% rAlbumin, 0.03% Proclin300 and 50% Glycerol.
Form/Appearance	Liquid
Concentration	1mg/ml
Storage	Shipped at 4°C. Store at -20 °C for one year. Avoid repeated freeze/thaw cycles.
Note	For research use only
Isotype	IgG
Clonality	Polyclonal
MW	52 kDa
Uniprot ID	Q13882
Dilution Range	Flow-Cyt=3µg/Test, WB=1:500-2000, IHC-P=1:100-500, IHC-F=1:100-500, ICC=1:100-500, IF=1:100-500, ELISA=1:5000-10000
Expiration Date	12 months from date of receipt.



Flow cytometric analysis of U937 cell us...