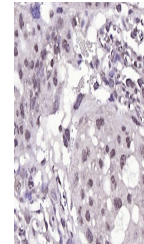


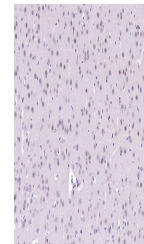
Product Datasheet

B-Raf (Phospho Ser729 antibody (orb155864))

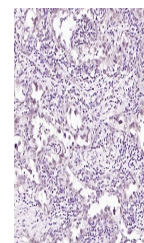
Description	B-Raf (Phospho Ser729 antibody)
Species/Host	Rabbit
Reactivity	Human, Mouse, Rat
Conjugation	Unconjugated
Tested Applications	IHC-P
Immunogen	KLH conjugated synthesised phosphopeptide derived from human BRAF around the phosphorylation site of Ser729 (SA(p-S)E)
Target	phospho-BRAF (Ser729)
Preservatives	0.01M TBS(pH7.4) with 1% rAlbumin, 0.03% Proclin300 and 50% Glycerol.
Form/Appearance	Liquid
Concentration	1mg/ml
Storage	Maintain refrigerated at 2-8°C for up to 2 weeks. For long term storage store at -20°C in small aliquots to prevent freeze-thaw cycles.
Note	For research use only
Isotype	IgG
Clonality	Polyclonal
MW	94 kDa
Uniprot ID	P15056
Dilution Range	IHC-P=1:100-500, WB=1:500-2000, IHC-F=1:100-500, ICC=1:100-500, IF=1:100-500, ELISA=1:5000-10000
Expiration Date	12 months from date of receipt.



IHC-P analysis of mouse placenta using phospho-BRAF antibody.



IHC-P analysis of rat brain using phospho-BRAF antibody.



IHC-P analysis of human cervical carcinoma using phospho-BRAF antibody.