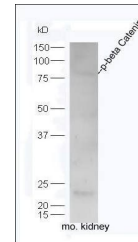


Product Datasheet

beta Catenin (Phospho-Tyr489) antibody (orb155829)

Description	beta Catenin (Phospho-Tyr489) antibody
Species/Host	Rabbit
Reactivity	Human, Rat
Conjugation	Unconjugated
Tested Applications	FC, IHC-P
Immunogen	KLH conjugated synthesised phosphopeptide derived from human beta Catenin around the phosphorylation site of Tyr489 (LH(p-Y)GL)
Target	phospho-beta Catenin (Tyr489)
Preservatives	0.01M TBS(pH7.4) with 1% rAlbumin, 0.03% Proclin300 and 50% Glycerol.
Form/Appearance	Liquid
Concentration	1mg/ml
Storage	Shipped at 4°C. Store at -20 °C for one year. Avoid repeated freeze/thaw cycles.
Note	For research use only
Isotype	IgG
Clonality	Polyclonal
MW	86 kDa
Uniprot ID	P35222
Dilution Range	IHC-P=1:100-500, Flow-Cyt=1ug/Test, WB=1:500-2000, IHC-F=1:100-500, ICC=1:100-500, IF=1:100-500, ELISA=1:5000-10000
Expiration Date	12 months from date of receipt.



Western blot analysis of mouse kidney ly...