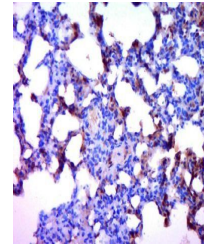


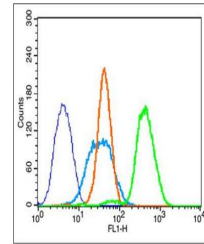
Product Datasheet

BCL2 (Phospho-Ser87) antibody (orb155807)

Description	BCL2 (Phospho-Ser87) antibody
Species/Host	Rabbit
Reactivity	Human, Rat
Conjugation	Unconjugated
Tested Applications	FC, IHC-P
Immunogen	KLH conjugated synthesised phosphopeptide derived from human Bcl2 around the phosphorylation site of Ser87 (AL(p-S)PV)
Target	Phospho-Bcl2 (Ser87)
Preservatives	0.01M TBS(pH7.4) with 1% rAlbumin, 0.03% Proclin300 and 50% Glycerol.
Form/Appearance	Liquid
Concentration	1mg/ml
Storage	Shipped at 4°C. Store at -20 °C for one year. Avoid repeated freeze/thaw cycles.
Note	For research use only
Isotype	IgG
Clonality	Polyclonal
MW	26 kDa
Uniprot ID	P49950
Dilution Range	IHC-P=1:100-500, Flow-Cyt=1µg/Test, IHC-F=1:100-500, ICC=1:100, IF=1:100-500, ELISA=1:5000-10000
Expiration Date	12 months from date of receipt.



Immunohistochemical staining of Rat lung...



Flow cytometric analysis of K562 Cell us...