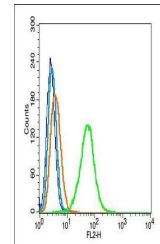


Product Datasheet

BCK antibody (orb155806)

Description	BCK antibody
Species/Host	Rabbit
Reactivity	Rat
Conjugation	Unconjugated
Tested Applications	FC
Immunogen	KLH conjugated synthetic peptide derived from human Creatine kinase B type (234-280/381 aa)
Target	Creatine kinase B type
Preservatives	0.01M TBS(pH7.4) with 1% rAlbumin, 0.03% Proclin300 and 50% Glycerol.
Form/Appearance	Liquid
Concentration	1mg/ml
Storage	Shipped at 4°C. Store at -20 °C for one year. Avoid repeated freeze/thaw cycles.
Note	For research use only
Isotype	IgG
Clonality	Polyclonal
MW	43 kDa
Uniprot ID	P12277, P06732
Dilution Range	Flow-Cyt=1µg/Test, IHC-P=1:100-500, IHC-F=1:100-500, ICC=1:100-500, IF=1:100-500, ELISA=1:5000-10000
Expiration Date	12 months from date of receipt.



Flow cytometric analysis of Rsc96 cell u...