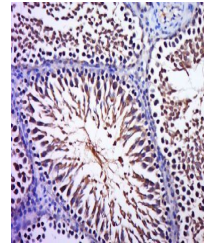


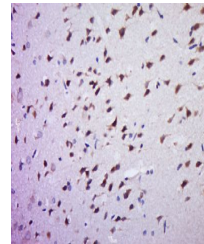
Product Datasheet

B Raf (Phospho-Thr446 + Ser601) antibody (orb155779)

Description	B Raf (Phospho-Thr446 + Ser601) antibody
Species/Host	Rabbit
Reactivity	Human, Rat
Conjugation	Unconjugated
Tested Applications	ELISA, IF, IHC-Fr, IHC-P
Immunogen	KLH conjugated synthesised phosphopeptide derived from human BRAF around the phosphorylation site of Thr446 + Ser601 (LA(p-T)VK(p-S)RW)
Target	phospho-BRAF (Thr598 + Ser601)
Preservatives	0.01M TBS(pH7.4) with 1% rAlbumin, 0.03% Proclin300 and 50% Glycerol.
Form/Appearance	Liquid
Concentration	1mg/ml
Storage	Shipped at 4°C. Store at -20 °C for one year. Avoid repeated freeze/thaw cycles.
Note	For research use only
Isotype	IgG
Clonality	Polyclonal
MW	94 kDa
Uniprot ID	P15056
Dilution Range	IHC-P=1:100-500, IHC-F=1:100-500, ICC=1:100-500, IF=1:100-500, ELISA=1:5000-10000
Expiration Date	12 months from date of receipt.



Immunohistochemical staining of rat testis...



Immunohistochemical staining of rat brain...