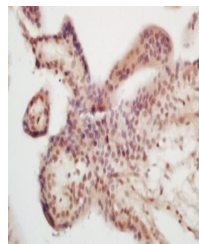


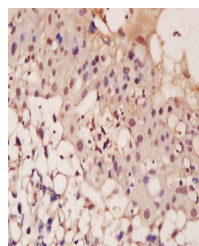
Product Datasheet

ASCL2 antibody (orb155740)

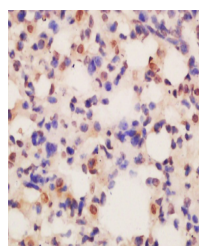
Description	ASCL2 antibody
Species/Host	Rabbit
Reactivity	Human, Mouse
Conjugation	Unconjugated
Tested Applications	FC, ICC
Immunogen	KLH conjugated synthetic peptide derived from Human ASCL2 (51-120/193 aa)
Target	ASCL2
Preservatives	0.01M TBS(pH7.4) with 1% rAlbumin, 0.03% Proclin300 and 50% Glycerol.
Form/Appearance	Liquid
Concentration	1mg/ml
Storage	Shipped at 4°C. Store at -20 °C for one year. Avoid repeated freeze/thaw cycles.
Note	For research use only
Isotype	IgG
Clonality	Polyclonal
MW	22 kDa
Uniprot ID	O35885
Dilution Range	ICC=1:100, Flow-Cyt=2ug/Test, IHC-P=1:100-500, IHC-F=1:100-500, IF=1:100-500, ELISA=1:5000-10000
Expiration Date	12 months from date of receipt.



Immunohistochemical analysis of mouse pl...



Immunohistochemical staining of mouse pl...



Immunohistochemical staining of mouse lu...