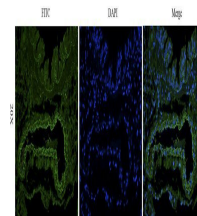


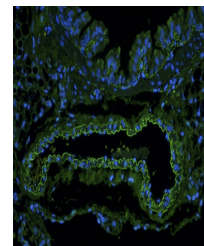
Product Datasheet

EpCAM antibody (FITC) (orb15573)

Description	EpCAM antibody (FITC)
Species/Host	Rabbit
Reactivity	Rat
Conjugation	FITC
Tested Applications	ICC, IF
Immunogen	Synthetic peptide (please contact us for details)
Target	EpCAM (FITC)
Form/Appearance	Liquid: PBS, 2 mM Sodium Azide, 30% glycerol
Concentration	- 100 µg (in 200 µl): 0.5 mg/ml
Storage	Store at 4°C for up to two weeks. For long term storage, aliquot and store at -20°C, avoid freeze/thaw cycles.
Note	For research use only
Isotype	IgG
Clonality	Polyclonal
Purity	Polyclonal antibodies are purified by peptide affinity chromatography
MW	35 kDa
Uniprot ID	O55159 , Q99JW5 , P16422
NCBI	NM_002354.2 , NP_002345.2
Entrez	4072
Dilution Range	IF/ICC:1:50-500
Expiration Date	12 months from date of receipt.



IF analysis of rat lung tissue using EpC...



Immunofluorescence image of rat lung tis...