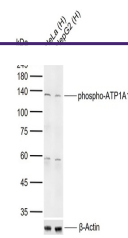

Product Datasheet

alpha 1 Sodium Potassium ATPase (Phospho-Tyr260) antibody (orb155637)

Description

alpha 1 Sodium Potassium ATPase (Phospho-

Species/Host	Rabbit
Reactivity	Human
Conjugation	Unconjugated
Tested Applications	ICC, IHC-P, WB
Immunogen	KLH conjugated synthesised phosphopeptide derived from human alpha 1 Sodium Potassium ATPase around the phosphorylation site of Tyr260 (V(p-Y)TG)
Target	phospho-ATP1A1 (Tyr260)
Preservatives	0.01M TBS(pH7.4) with 1% rAlbumin, 0.03% Proclin300 and 50% Glycerol.
Form/Appearance	Liquid
Concentration	1mg/ml
Storage	Maintain refrigerated at 2-8°C for up to 2 weeks. For long term storage store at -20°C in small aliquots to prevent freeze-thaw cycles.
Note	For research use only
Isotype	IgG
Clonality	Polyclonal
MW	113 kDa
Uniprot ID	P05023
Dilution Range	WB=1:500-2000, ICC=1:100, IHC-F=1:100-500, IF=1:100-500, ELISA=1:5000-10000
Expiration Date	12 months from date of receipt.



Western blot: Lane 1: Human HeLa cell; Lane...