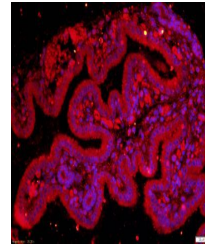


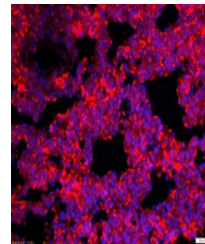
Product Datasheet

ACTR1 antibody (orb155587)

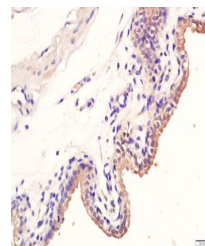
Description	ACTR1 antibody
Species/Host	Rabbit
Reactivity	Human
Conjugation	Unconjugated
Tested Applications	ELISA, ICC, IF, IHC-Fr, IHC-P, WB
Immunogen	KLH conjugated synthetic peptide derived from human Activin receptor type-1 (65-160/509 aa)
Target	Activin receptor type-1
Preservatives	0.01M TBS(pH7.4) with 1% rAlbumin, 0.03% Proclin300 and 50% Glycerol.
Form/Appearance	Liquid
Concentration	1mg/ml
Storage	Shipped at 4°C. Store at -20 °C for one year. Avoid repeated freeze/thaw cycles.
Note	For research use only
Isotype	IgG
Clonality	Polyclonal
MW	55 kDa
Uniprot ID	Q04771
Expiration Date	12 months from date of receipt.



Immunohistochemical staining of mouse pl...



Immunohistochemical staining of Rat lung...



Immunohistochemical staining of mouse pl...