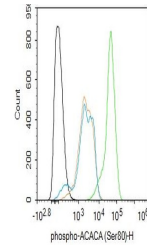


## Product Datasheet

# Acetyl Coenzyme A Carboxylase alpha (Phospho-Ser80 antibody) (orb155575)

<b>Description</b>	Acetyl Coenzyme A Carboxylase alpha (Phospho-Ser80 antibody)
<b>Species/Host</b>	Rabbit
<b>Reactivity</b>	Human
<b>Conjugation</b>	Unconjugated
<b>Tested Applications</b>	ELISA, IF, IHC-Fr, WB
<b>Immunogen</b>	KLH conjugated synthesised phosphopeptide derived from human Acetyl Coenzyme A Carboxylase alpha around the phosphorylation site of Ser80 (SM(p-S)GL)
<b>Target</b>	phospho-ACACA (Ser80)
<b>Preservatives</b>	0.01M TBS(pH7.4) with 1% rAlbumin, 0.03% Proclin300 and 50% Glycerol.
<b>Form/Appearance</b>	Liquid
<b>Concentration</b>	1mg/ml
<b>Storage</b>	Maintain refrigerated at 2-8°C for up to 2 weeks. For long term storage store at -20°C in small aliquots to prevent freeze-thaw cycles.
<b>Note</b>	For research use only
<b>Isotype</b>	IgG
<b>Clonality</b>	Polyclonal
<b>MW</b>	265 kDa
<b>Uniprot ID</b>	<a href="#">Q13085</a>
<b>Expiration Date</b>	12 months from date of receipt.



Flow cytometry of HepG2(black line).Prim...