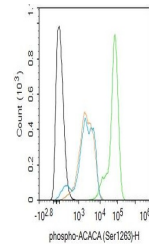


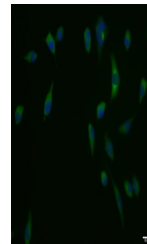
Product Datasheet

Acetyl Coenzyme A Carboxylase alpha (Phospho-Ser12 antibody) (orb155574)

Description	Acetyl Coenzyme A Carboxylase alpha (Phospho-Ser12 antibody)
Species/Host	Rabbit
Reactivity	Human
Conjugation	Unconjugated
Tested Applications	ELISA
Immunogen	KLH conjugated synthesised phosphopeptide derived from human Acetyl Coenzyme A Carboxylase alpha around the phosphorylation site of Ser1263 (PQ(p-S)PT)
Target	phospho-ACACA (Ser1263)
Preservatives	0.01M TBS(pH7.4) with 1% rAlbumin, 0.03% Proclin300 and 50% Glycerol.
Form/Appearance	Liquid
Concentration	1mg/ml
Storage	Maintain refrigerated at 2-8°C for up to 2 weeks. For long term storage store at -20°C in small aliquots to prevent freeze-thaw cycles.
Note	For research use only
Isotype	IgG
Clonality	Polyclonal
MW	265 kDa
Uniprot ID	Q13085
Expiration Date	12 months from date of receipt.



Flow cytometry of HepG2(black line).Prim...



ICC analysis of SH-SY5Y cell using phospho...