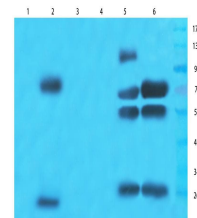


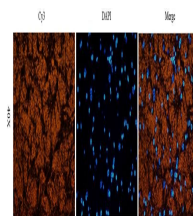
Product Datasheet

ABCG2 antibody (orb155559)

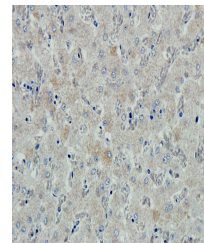
Description	ABCG2 antibody
Species/Host	Rabbit
Conjugation	Unconjugated
Tested Applications	ICC, IF, IHC-P, WB
Immunogen	KLH conjugated synthetic peptide derived from human ABCG2. Please contact us for the exact immunogen sequence. The peptide is available as orb12938.
Target	ABCG2
Form/Appearance	10 mM PBS, 0.02% sodium azide
Concentration	-100 µg (in 200 µl): 0.5 mg/ml-200 µg (in 400 µl): 0.5 mg/ml
Storage	Maintain refrigerated at 2-8°C for up to 2 weeks. For long term storage store at -20°C in small aliquots to prevent freeze-thaw cycles.
Note	For research use only
Isotype	IgG
Clonality	Polyclonal
Purity	Polyclonal antibodies are purified by peptide affinity chromatography
MW	72 kDa
Uniprot ID	Q9UNQ0 , Q80W57 , Q7TMS5
Entrez	9429
Dilution Range	IF/ICC: 1:100-500, IHC-P: 1:100-500, WB: 1:200-2000
Expiration Date	12 months from date of receipt.



WB analysis of mouse brain (lane 1), rat...



IF image of rat brain tissue using anti-...



Immunohistochemical staining of paraffin...