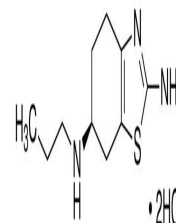


Product Datasheet

Pramipexole dihydrochloride (orb154668)

Description	Pramipexole is a partial/full D2S, D2L, D3, D4, receptor agonist with a K_i of 3.9, 2.2, 0.5, 5.1 nM.
Note	For research use only
Formula	$C_{10}H_{17}N_3S \cdot 2(HCl)$
MW	284.25
CAS Number	[104632-25-9]
SMILES	<chem>NC(S1)=NC2=C1C[C@@H](NCCC)CC2.[H]Cl.[H]Cl</chem>
Expiration Date	12 months from date of receipt.



Pramipexole dihydrochloride