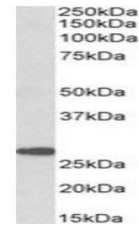


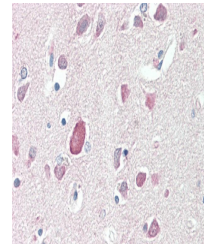
Product Datasheet

PTGDS antibody (orb154572)

Description	Goat polyclonal antibody to PTGDS, which is a member of the calycin superfamily, Lipocalin family. PT...
Species/Host	Goat
Reactivity	Human
Conjugation	Unconjugated
Tested Applications	ELISA, IHC, WB
Target	PTGDS
Preservatives	Supplied at 0.5 mg/ml in Tris saline, 0.02% sodium azide, pH 7.3 with 0.5% bovine serum albumin. Aliquot and store at -20°C. Minimize freezing and thawing.
Storage	Aliquot and store at -20°C. Minimize freezing and thawing.
Note	For research use only
Application notes	WB: Approx 27kDa band observed in Human Brain (Cerebellum, Frontal Cortex) lysates (calculated MW of 21.0kDa according to NP_000945.3). The observed molecular weight corresponds to the glycosylated form. Recommended concentration: 0.3-1 µg/ml.
Protein Sequence	QVSVQPNFQQDK
Clonality	Polyclonal
MW	21
Entrez	5730
Dilution Range	ELISA: 1:128000, WB: 0.3-1 µg/ml, IHC-P: 5 µg/ml
Expiration Date	12 months from date of receipt.



Western blot analysis of Human Cerebellu...



Immunohistochemical staining of Human Co...