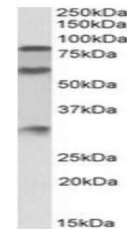


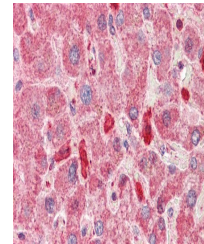
## Product Datasheet

### KNG1 antibody (orb154567)

<b>Description</b>	Goat polyclonal antibody to KNG1 which is a protein from the blood coagulation system as well as the...
<b>Species/Host</b>	Goat
<b>Reactivity</b>	Human
<b>Conjugation</b>	Unconjugated
<b>Tested Applications</b>	ELISA, IHC, WB
<b>Target</b>	kininogen 1
<b>Preservatives</b>	Supplied at 0.5 mg/ml in Tris saline, 0.02% sodium azide, pH 7.3 with 0.5% bovine serum albumin. Aliquot and store at -20°C. Minimize freezing and thawing.
<b>Storage</b>	Aliquot and store at -20°C. Minimize freezing and thawing.
<b>Note</b>	For research use only
<b>Application notes</b>	WB: Approx 80+60+30kDa bands observed in Human Kidney lysates (calculated MW of 72.0kDa according to NP_001095886.1). The observed MW bands are explained by glycosylation and the splitting into heavy and light chains from the precursor protein. Recommended concentration: 0.3-1 µg/ml.
<b>Protein Sequence</b>	RITEATKTVGSDT
<b>Clonality</b>	Polyclonal
<b>MW</b>	72.0;
<b>Entrez</b>	<b>3827</b>
<b>Dilution Range</b>	ELISA: 1:128000, WB: 0.3-1 µg/ml, IHC-P: 5 µg/ml
<b>Expiration Date</b>	12 months from date of receipt.



Western blot analysis of Human Kidney ly...



Immunohistochemical staining of Human Li...