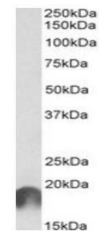


## Product Datasheet

### ANAPC11 antibody (orb154554)

<b>Description</b>	Goat polyclonal antibody to ANAPC11, which belongs to the RING-box family. It highly expressed in sk...
<b>Species/Host</b>	Goat
<b>Reactivity</b>	Human
<b>Conjugation</b>	Unconjugated
<b>Tested Applications</b>	ELISA, WB
<b>Target</b>	ANAPC11
<b>Preservatives</b>	Supplied at 0.5 mg/ml in Tris saline, 0.02% sodium azide, pH 7.3 with 0.5% bovine serum albumin. Aliquot and store at -20°C. Minimize freezing and thawing.
<b>Storage</b>	Aliquot and store at -20°C. Minimize freezing and thawing.
<b>Note</b>	For research use only
<b>Application notes</b>	WB: Approx 19kDa band observed in Human Brain (Cerebral and Frontal Cortex, Hippocampus) lysates (calculated MW of 20.6kDa according to NP_001002244.1). Recommended concentration: 0.3-1 µg/ml.
<b>Protein Sequence</b>	PALDQETSSLLRCTS
<b>Clonality</b>	Polyclonal
<b>MW</b>	20.6; 9.84
<b>Entrez</b>	<a href="#">51529</a>
<b>Dilution Range</b>	ELISA: 1:32000, WB: 0.3-1 µg/ml
<b>Expiration Date</b>	12 months from date of receipt.



Western blot analysis of Cerebral Cortex...