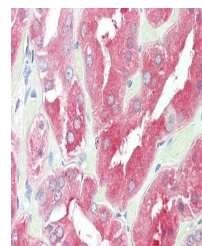


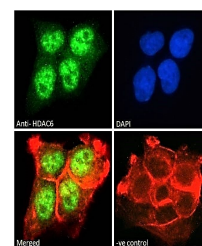
Product Datasheet

HDAC6 antibody (orb154549)

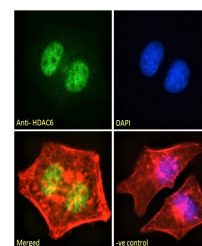
Description	Goat polyclonal antibody to HDAC6, which is a member of the histone deacetylase family, HD type 2 su...
Species/Host	Goat
Reactivity	Bovine, Canine, Human, Mouse, Rat
Conjugation	Unconjugated
Tested Applications	ELISA, FC, IF, IHC
Target	HDAC6
Preservatives	Supplied at 0.5 mg/ml in Tris saline, 0.02% sodium azide, pH 7.3 with 0.5% bovine serum albumin. Aliquot and store at -20°C. Minimize freezing and thawing.
Storage	Aliquot and store at -20°C. Minimize freezing and thawing.
Note	For research use only
Application notes	WB: Approx 150kDa band observed in nuclear lysates of cell lines NIH3T3, and HeLa (calculated MW of 131kDa according to NP_006035.2). Recommended concentration: 1-3 µg/ml.
Protein Sequence	AHQNKFGEDMPHPH
Clonality	Polyclonal
MW	131; 132.8
Entrez	10013
Dilution Range	ELISA: 1:32000, IHC-P: 5 µg/ml
Expiration Date	12 months from date of receipt.



Immunohistochemical staining of Human Ki...



Immunofluorescence analysis of A431 cell...



Immunofluorescence analysis of HeLa cell...