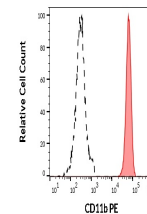


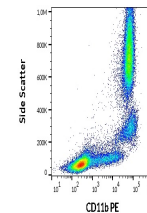
## Product Datasheet

### CD11b antibody (PE ) (orb154517)

<b>Description</b>	Mouse monoclonal antibody to CD11b (PE )
<b>Reactivity</b>	Human, Primate
<b>Conjugation</b>	PE
<b>Tested Applications</b>	FC
<b>Immunogen</b>	Rheumatoid synovial cells and human monocytes.
<b>Target</b>	CD11b
<b>Preservatives</b>	Stabilizing phosphate buffered saline (PBS), pH 7.4, 15 mM sodium azide
<b>Storage</b>	Store at 2-8°C. Protect from prolonged exposure to light. Do not freeze.
<b>Note</b>	For research use only
<b>Application notes</b>	Flow cytometry: The reagent is designed for analysis of human blood cells using 10 µl reagent / 100 µl of whole blood or 106 cells in a suspension. The content of a vial (1 ml) is sufficient for 100 tests.
<b>Isotype</b>	Mouse IgG1
<b>Clonality</b>	Monoclonal
<b>Purity</b>	Purified antibody is conjugated with R-phycoerythrin (PE) under optimum conditions. Unconjugated antibody and free fluorochrome are removed by size-exclusion chromatography.
<b>Uniprot ID</b>	<a href="#">P11215</a>
<b>Entrez</b>	<a href="#">3684</a>
<b>Dilution Range</b>	Flow cytometry: The reagent is designed for analysis of human blood cells using 10 µl reagent / 100 µl of whole blood or 106 cells in a suspension. The content of a vial (1 ml) is sufficient for 100 tests.
<b>Expiration Date</b>	12 months from date of receipt.



Separation of human neutrophil granulocy...



Flow cytometry surface staining pattern ...