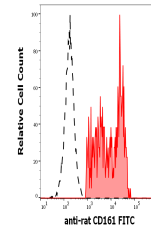


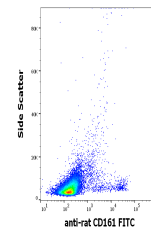
Product Datasheet

CD161 antibody (FITC) (orb154481)

Description	Mouse monoclonal antibody conjugated to FITC which recognizes CD161 that is expressed in a subset of...
Reactivity	Rat
Conjugation	FITC
Tested Applications	FC
Immunogen	Splenic cells purified from the LEW rat
Target	CD161
Preservatives	Phosphate buffered saline (PBS), pH 7.4, 15 mM sodium azide
Concentration	0.5 mg/ml
Storage	Store at 2-8°C. Protect from prolonged exposure to light. Do not freeze.
Note	For research use only
Application notes	Flow cytometry: Recommended dilution: 2-5 µg/ml.
Isotype	Mouse IgG1 kappa
Clonality	Monoclonal
Purity	Purified antibody is conjugated with fluorescein isothiocyanate (FITC) under optimum conditions and unconjugated antibody and free fluorochrome are removed by size-exclusion chromatography.
Uniprot ID	Q0ZUP0
Entrez	689817
Dilution Range	Flow cytometry: Recommended dilution: 2-5 µg/ml.
Expiration Date	12 months from date of receipt.



Separation of rat CD161 positive cells (...)



Flow cytometry surface staining pattern ...