

---

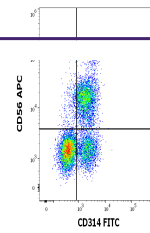
## Product Datasheet

### CD314 antibody (FITC) (orb154477)

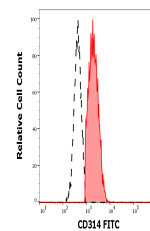
**Description**

Mouse monoclonal antibody conjugated to FITC which

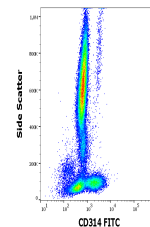
<b>Reactivity</b>	Human
<b>Conjugation</b>	FITC
<b>Tested Applications</b>	FC
<b>Immunogen</b>	NKL cell line
<b>Target</b>	CD314
<b>Preservatives</b>	Stabilizing phosphate buffered saline (PBS), pH 7.4, 15 mM sodium azide
<b>Storage</b>	Store at 2-8°C. Protect from prolonged exposure to light. Do not freeze.
<b>Note</b>	For research use only
<b>Application notes</b>	Flow cytometry: The reagent is designed for analysis of human blood cells using 4 µl reagent / 100 µl of whole blood or 10 <sup>6</sup> cells in a suspension. The content of a vial (0.4 ml) is sufficient for 100 tests.
<b>Isotype</b>	Mouse IgG1 kappa
<b>Clonality</b>	Monoclonal
<b>Purity</b>	Purified antibody is conjugated with fluorescein isothiocyanate (FITC) under optimum conditions and unconjugated antibody and free fluorochrome are removed by size-exclusion chromatography.
<b>Uniprot ID</b>	<a href="#">P26718</a>
<b>Entrez</b>	<a href="#">22914</a>
<b>Dilution Range</b>	Flow cytometry: The reagent is designed for analysis of human blood cells using 4 µl reagent / 100 µl of whole blood or 10 <sup>6</sup> cells in a suspension. The content of a vial (0.4 ml) is sufficient for 100 tests.
<b>Expiration Date</b>	12 months from date of receipt.



Flow cytometry multicolor surface staining...



Separation of human CD314 positive CD56 ...



Flow cytometry surface staining pattern ...