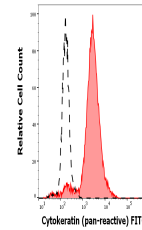


Product Datasheet

pan Cytokeratin antibody (FITC) (orb154470)

Description	Mouse monoclonal antibody against pan Cytokeratin conjugated to (FITC)
Reactivity	Mammal
Conjugation	FITC
Tested Applications	FC
Immunogen	Keratin-enriched preparation from human epidermoid carcinoma cell line A431.
Target	Cytokeratins
Preservatives	Phosphate buffered saline (PBS), pH 7.4, 15 mM sodium azide
Concentration	1 mg/ml
Storage	Store at 2-8°C. Protect from prolonged exposure to light. Do not freeze.
Note	For research use only
Application notes	Flow cytometry: Recommended dilution: 1 µg/ml. Intracellular staining.
Isotype	Mouse IgG1
Clonality	Monoclonal
Purity	Purified antibody is conjugated with fluorescein isothiocyanate (FITC) under optimum conditions and unconjugated antibody and free fluorochrome are removed by size-exclusion chromatography.
Dilution Range	Flow cytometry: Recommended dilution: 1 µg/ml. Intracellular staining.
Expiration Date	12 months from date of receipt.



Separation of HeLa cells (red-filled) st...