

## Product Datasheet

### Anti-gamma-Tubulin GCP2 Purified (orb154401)

|                            |   |
|----------------------------|---|
| <b>Description</b>         | Mouse monoclonal antibody to Gamma-tubulin complex component 2 which is also known as TUBGCP2 or SPBC97, is a ubiquitously expressed 902 amino acid protein that localizes to the centrosome and is involved in microtubule nucleatio. Gamma tubulin is found at microtubule organizing centers (MTOC) such as the spindle poles or the centrosome. |
| <b>Reactivity</b>          | Human, Mouse, Porcine, Rat  |
| <b>Conjugation</b>         | Unconjugated  |
| <b>Tested Applications</b> | ICC, IHC-P, IP, WB  |
| <b>Immunogen</b>           | GST-fusion protein containing amino acids 2-194 of mouse GCP2   |
| <b>Target</b>              | gamma-Tubulin GCP2  |
| <b>Preservatives</b>       | Phosphate buffered saline (PBS), pH 7.4, 15 mM sodium azide   |
| <b>Concentration</b>       | 1 mg/ml   |
| <b>Storage</b>             | Maintain refrigerated at 2-8°C for up to 2 weeks. For long term storage store at -20°C in small aliquots to prevent freeze-thaw cycles.   |
| <b>Note</b>                | For research use only   |
| <b>Application notes</b>   | Western blotting: Recommended dilution: 1-2 µg/ml, reducing conditions.   |
| <b>Isotype</b>             | Mouse IgG2b kappa   |
| <b>Clonality</b>           | Monoclonal  |
| <b>Clone Number</b>        | GCP2-01   |
| <b>Purity</b>              | Purified by protein-A affinity chromatography.  |
| <b>Uniprot ID</b>          | <b>Q9BSJ2</b>   |

**Biorbyt Ltd.**

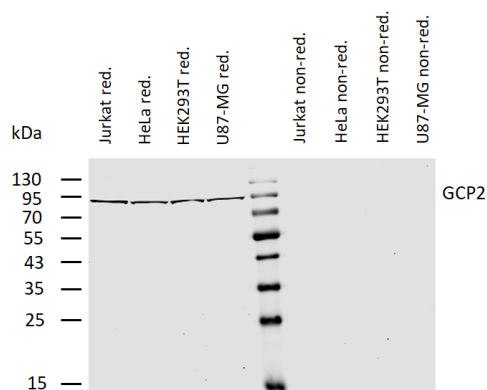
7 Signet Court, Swann's Road,  
Cambridge, CB5 8LA, United Kingdom  
Email: [info@biorbyt.com](mailto:info@biorbyt.com), [support@biorbyt.com](mailto:support@biorbyt.com)  
Phone: [+44 \(0\) 1223 859-353](tel:+44(0)1223859353) | Fax: [+1 \(415\) 651-8558](tel:+1(415)6518558)

**Biorbyt LLC.**

68 TW Alexander Drive,  
Durham, NC, 27713, United States  
Email: [info@biorbyt.com](mailto:info@biorbyt.com), [support@biorbyt.com](mailto:support@biorbyt.com)  
Phone: [+1 \(415\) 906-5211](tel:+1(415)9065211) | Fax: [+1 \(415\) 651-8558](tel:+1(415)6518558)

**Entrez****10844****Expiration Date**

12 months from date of receipt.



Western blotting analysis of human gamma-tubulin complex component 2 (GCP2) using mouse monoclonal antibody GCP2-01 on lysates of various cell lines under reducing and non-reducing conditions. Nitrocellulose membrane was probed with 2 µg/ml of mouse anti-GCP2 monoclonal antibody followed by IRDye800-conjugated anti-mouse secondary antibody. A specific band was detected for GCP2 at approximately 95 kDa.

**Biorbyt Ltd.**

7 Signet Court, Swann's Road,  
Cambridge, CB5 8LA, United Kingdom

Email: [info@biorbyt.com](mailto:info@biorbyt.com), [support@biorbyt.com](mailto:support@biorbyt.com)

Phone: [+44 \(0\) 1223 859-353](tel:+44(0)1223859353) | Fax: [+1 \(415\) 651-8558](tel:+1(415)6518558)

**Biorbyt LLC.**

68 TW Alexander Drive,  
Durham, NC, 27713, United States

Email: [info@biorbyt.com](mailto:info@biorbyt.com), [support@biorbyt.com](mailto:support@biorbyt.com)

Phone: [+1 \(415\) 906-5211](tel:+1(415)9065211) | Fax: [+1 \(415\) 651-8558](tel:+1(415)6518558)