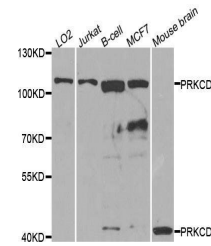


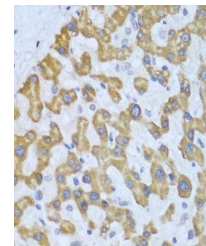
Product Datasheet

PKCD antibody (orb154142)

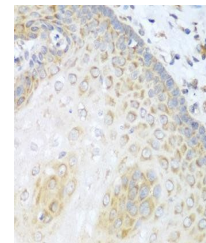
Description	Rabbit polyclonal antibody to PKCD. Activation of protein kinase C (PKC) is one of the earliest even...
Reactivity	Human, Mouse, Rat
Conjugation	Unconjugated
Tested Applications	ICC, IF, IHC, WB
Immunogen	Recombinant fusion protein of human PKC delta(NP_006245.2).
Preservatives	PBS with 0.01% thiomersal,50% glycerol,pH7.3.
Storage	Maintain refrigerated at 2-8°C for up to 2 weeks. For long term storage store at -20°C in small aliquots to prevent freeze-thaw cycles.
Note	For research use only
Isotype	IgG
Clonality	Polyclonal
MW	78kDa/85kDa
Uniprot ID	Q05655
Dilution Range	WB: 1:500-2000, IHC-P: 1:50-100
Expiration Date	12 months from date of receipt.



Western blot analysis of extracts of var...



Immunohistochemical staining of human li...



Immunohistochemical staining of human es...