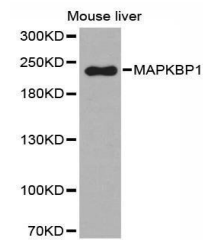


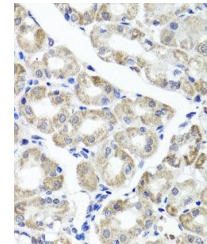
## Product Datasheet

### MAPKBP1 antibody (orb154035)

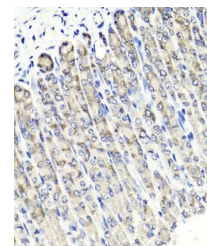
<b>Description</b>	Rabbit polyclonal antibody to MAPKBP1. MAP kinases play a significant role in many biological proces...
<b>Reactivity</b>	Human, Mouse, Rat
<b>Conjugation</b>	Unconjugated
<b>Tested Applications</b>	WB
<b>Immunogen</b>	A synthetic peptide of human MAPKBP1(NP_001122080.1).
<b>Preservatives</b>	PBS with 0.02% sodium azide,50% glycerol,pH7.3.
<b>Storage</b>	Store at -20°C. Avoid freeze / thaw cycles.
<b>Note</b>	For research use only
<b>Isotype</b>	IgG
<b>Clonality</b>	Polyclonal
<b>MW</b>	164kDa
<b>Uniprot ID</b>	<b>O60336</b>
<b>Dilution Range</b>	WB: 1:200-500, IHC-P: 1:50-100
<b>Expiration Date</b>	12 months from date of receipt.



Western blot analysis of extracts of mou...



Immunohistochemical staining of mouse st...



Immunohistochemical staining of human st...