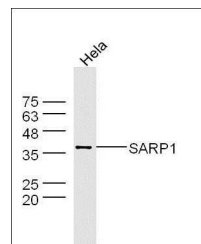


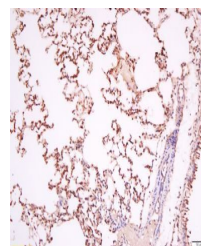
Product Datasheet

SFRP2 antibody (orb1540)

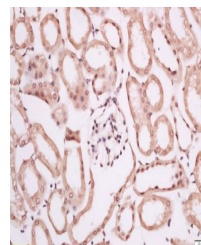
Description	SFRP2 antibody
Species/Host	Rabbit
Reactivity	Human
Conjugation	Unconjugated
Tested Applications	ELISA, ICC, IF, IHC-Fr, IHC-P, WB
Immunogen	KLH conjugated synthetic peptide derived from human SFRP2/SARP1 (201-295/295 aa)
Target	SARP1
Preservatives	0.01M TBS(pH7.4) with 1% rAlbumin, 0.03% Proclin300 and 50% Glycerol.
Form/Appearance	Liquid
Concentration	1mg/ml
Storage	Shipped at 4°C. Store at -20 °C for one year. Avoid repeated freeze/thaw cycles.
Note	For research use only
Isotype	IgG
Clonality	Polyclonal
MW	33 kDa
Uniprot ID	Q96HF1
Expiration Date	12 months from date of receipt.



Western blot analysis of extracts from H...



Immunohistochemical staining of Rat lung...



Immunohistochemical staining of mouse ki...