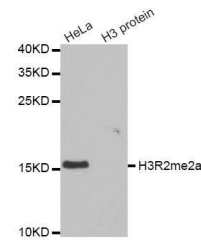


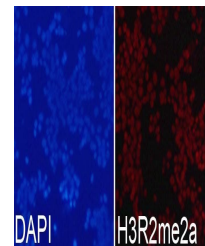
Product Datasheet

H3R2me2a antibody (orb153937)

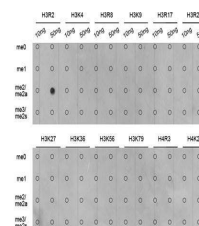
| | |
|----------------------------|---|
| Description | Rabbit polyclonal antibody to H3R2me2a |
| Reactivity | All, Human, Mouse, Rat |
| Conjugation | Unconjugated |
| Tested Applications | ChIP, ICC, IF, IP, WB |
| Immunogen | A synthetic asymmetric dimethylated peptide around R2 of human histone H3(NP_003520.1). |
| Preservatives | PBS with 0.01% thiomersal,50% glycerol,pH7.3. |
| Concentration | 1 mg/ml |
| Storage | Maintain refrigerated at 2-8°C for up to 2 weeks. For long term storage store at -20°C in small aliquots to prevent freeze-thaw cycles. |
| Note | For research use only |
| Isotype | IgG |
| Clonality | Polyclonal |
| MW | 17kDa |
| Uniprot ID | Q16695 |
| Dilution Range | WB: 1:500-2000, IHC-P: 1:50-200, IF/ICC: 1:50-200, IP: 1:50-200, ChIP: 1:20-100, ChIP |
| Expiration Date | 12 months from date of receipt. |



Western blot analysis of extracts of var...



Immunofluorescence analysis of 293T cell...



Dot-blot analysis of all sorts of methyl...