
Product Datasheet

Symmetric DiMethyl-Histone H3-R8 antibody (orb153935)

Description

Rabbit polyclonal antibody to Symmetric DiMethyl-


Reactivity

All, Human, Mouse, Rat

Conjugation

Unconjugated

Tested Applications

ChIP, ICC, IF, IHC, IP, WB

Immunogen

A synthetic symmetric dimethylated peptide around R8 of human histone H3(NP_003520.1).

Preservatives

PBS with 0.02% sodium azide,50% glycerol,pH7.3.

Concentration

1 mg/ml

Storage

Maintain refrigerated at 2-8°C for up to 2 weeks. For long term storage store at -20°C in small aliquots to prevent freeze-thaw cycles.

Note

For research use only

Isotype

IgG

Clonality

Polyclonal

MW

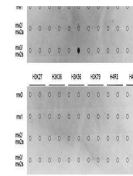
17kDa

Uniprot ID
[Q16695](#)
Dilution Range

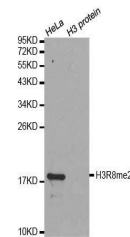
WB: 1:500-2000, IHC-P: 1:50-200, IF/ICC: 1:50-200, IP: 1:50-200, ChIP: 1:20-50

Expiration Date

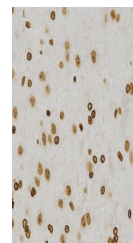
12 months from date of receipt.



Dot-blot analysis of all sorts of methyl...



Western blot analysis of extracts of HeL...



IHC-P staining of rat brain tissue using...