

Product Datasheet

DiMethyl-Histone H4-K20 antibody (orb153925)

Description Rabbit polyclonal antibody to DiMethyl-Histone H4-K20

Reactivity All, Human, Mouse, Rat

Conjugation Unconjugated

Tested Applications ChIP, ICC, IF, IHC, IP, WB

Immunogen A synthetic dimethylated peptide around K20 of human histone H4(NP_003529.1).

Preservatives PBS with 0.01% thiomersal,50% glycerol,pH7.3.

Concentration 1 mg/ml

Storage Maintain refrigerated at 2-8°C for up to 2 weeks. For long term storage store at -20°C in small aliquots to prevent freeze-thaw cycles.

Note For research use only

Isotype IgG

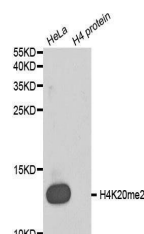
Clonality Polyclonal

MW 11KDa

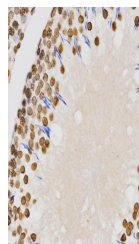
Uniprot ID **P62805**

Dilution Range WB: 1:500-2000, IHC-P: 1:50-200, IF/ICC: 1:50-200, IP: 1:50-200, ChIP: 1:20-100, ChIP

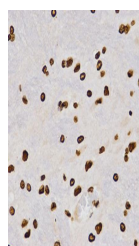
Expiration Date 12 months from date of receipt.



Western blot analysis of extracts of HeL...



IHC-P image of rat testis tissue using H...



IHC-P staining of rat brain tissue using...