

Product Datasheet

CLU/Clusterin Antibody (orb1537899)

Description	CLU/Clusterin Antibody
Species/Host	Goat
Reactivity	Human, Monkey
Conjugation	Unconjugated
Tested Applications	ELISA, IF, IHC-P, WB
Immunogen	Peptide with sequence C-EKALQEYRKKHREE, from the C-Terminus of protein sequence according to NP_001822.2NP_976084.1.
Target	CLU / Clusterin
Preservatives	TBS, pH 7.3, 0.02% Sodium Azide, 0.5% rAlbumin
Concentration	0.5 mg/ml
Storage	Maintain refrigerated at 2-8°C for up to 2 weeks. For long term storage store at -20°C in small aliquots to prevent freeze-thaw cycles.
Note	For research use only
Application notes	Further information: Immunohistochemistry: LS-B2852 was validated for use in immunohistochemistry on a panel of 21 formalin-fixed, paraffin-embedded (FFPE) human tissues after heat induced antigen retrieval in pH 6.0 citrate buffer. After incubation with the primary antibody, slides were incubated with biotinylated secondary antibody, followed by alkaline phosphatase-streptavidin and chromogen. The stained slides were evaluated by a pathologist to confirm staining specificity. The optimal working concentration for LS-B2852 was determined to be 2.5 ug/ml.
Clonality	Polyclonal
Dilution Range	IF (10 µg/ml), IHC-P (2.5 µg/ml), Peptide-ELISA (1:64000), WB (0.03 - 0.1 µg/ml)

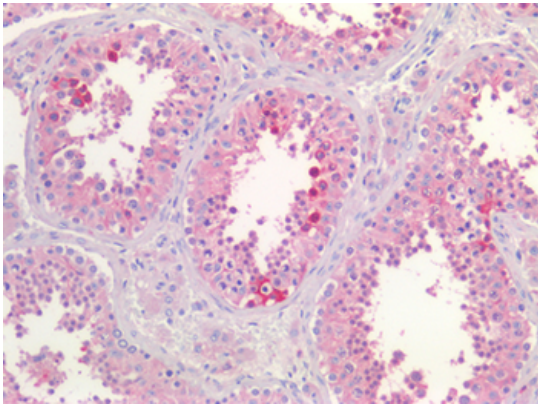
Biorbyt Ltd.

7 Signet Court, Swann's Road,
Cambridge, CB5 8LA, United Kingdom
Email: info@biorbyt.com, support@biorbyt.com
Phone: [+44 \(0\) 1223 859-353](tel:+44(0)1223859353) | Fax: [+1 \(415\) 651-8558](tel:+1(415)6518558)

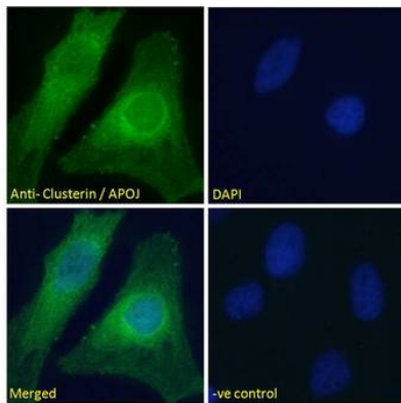
Biorbyt LLC.

68 TW Alexander Drive,
Durham, NC, 27713, United States
Email: info@biorbyt.com, support@biorbyt.com
Phone: [+1 \(415\) 906-5211](tel:+1(415)9065211) | Fax: [+1 \(415\) 651-8558](tel:+1(415)6518558)

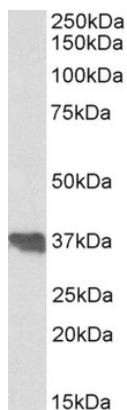
Expiration Date 12 months from date of receipt.



Human Testis: Formalin-Fixed, Paraffin-Embedded (FFPE)



CLU / Clusterin antibody immunofluorescence analysis of paraformaldehyde fixed HeLa cells, permeabilized with 0.15% Triton. Primary incubation 1hr (10 ug/ml) followed by Alexa Fluor 488 secondary antibody (2 ug/ml).



CLU / Clusterin antibody (0.1 μ g/ml) staining of Human Colon lysate (35 μ g protein in RIPA buffer). Detected by chemiluminescence.

Biorbyt Ltd.

7 Signet Court, Swann's Road,
Cambridge, CB5 8LA, United Kingdom
Email: info@biorbyt.com, support@biorbyt.com
Phone: [+44 \(0\) 1223 859-353](tel:+44(0)1223859353) | Fax: [+1 \(415\) 651-8558](tel:+1(415)6518558)

Biorbyt LLC.

68 TW Alexander Drive,
Durham, NC, 27713, United States
Email: info@biorbyt.com, support@biorbyt.com
Phone: [+1 \(415\) 906-5211](tel:+1(415)9065211) | Fax: [+1 \(415\) 651-8558](tel:+1(415)6518558)