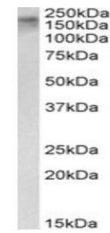


Product Datasheet

ERCC6 antibody (orb153643)

Description	Goat polyclonal to ERCC6.
Species/Host	Goat
Reactivity	Bovine, Canine, Human, Mouse, Porcine, Rat
Conjugation	Unconjugated
Tested Applications	ELISA, WB
Target	ERCC6 (aa717-731)
Preservatives	Supplied at 0.5 mg/ml in Tris saline, 0.02% sodium azide, pH 7.3 with 0.5% bovine serum albumin. Aliquot and store at -20°C. Minimize freezing and thawing.
Storage	Aliquot and store at -20°C. Minimize freezing and thawing.
Note	For research use only
Application notes	WB: Approx 170 kDa band observed in nuclear lysates of cell line HeLa (calculated MW of 168 kDa according to NP_000115.1). Recommended concentration: 0.3-1 µg/ml.
Protein Sequence	SNASPVQVKTAYKCA
Clonality	Polyclonal
MW	168
Entrez	2074
Dilution Range	ELISA: 1:128000, WB: 0.3-1 µg/ml
Expiration Date	12 months from date of receipt.



Western blot analysis of HeLa nuclear lysate...