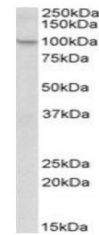


Product Datasheet

Nlrp12 antibody (orb153639)

Description	Goat polyclonal to Nlrp12.
Species/Host	Goat
Reactivity	Mouse, Rat
Conjugation	Unconjugated
Tested Applications	ELISA, WB
Target	Nalp12 / Nlrp12 (rodent)
Preservatives	Supplied at 0.5 mg/ml in Tris saline, 0.02% sodium azide, pH 7.3 with 0.5% bovine serum albumin. Aliquot and store at -20°C. Minimize freezing and thawing.
Storage	Aliquot and store at -20°C. Minimize freezing and thawing.
Note	For research use only
Application notes	WB: Approx 100 kDa band observed in Mouse Liver and Spleen lysates (calculated MW of 119 kDa according to NP_001028603.1). The observed molecular weight corresponds to earlier findings in literature with different antibodies
Protein Sequence	KPGTPTFKVPANQR
Clonality	Polyclonal
MW	119
Dilution Range	ELISA: 1:128000, WB: 1-3 µg/ml
Expiration Date	12 months from date of receipt.



Western blot analysis of Mouse Spleen ly...