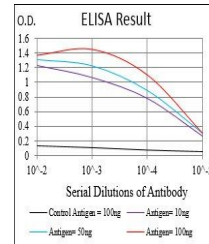


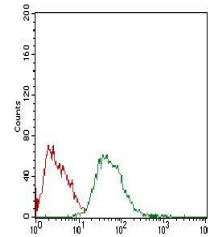
Product Datasheet

CSF1R Antibody (orb153539)

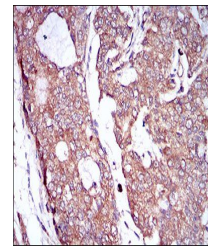
Description	Mouse monoclonal antibody to CSF1R
Species/Host	Mouse
Reactivity	Human
Conjugation	Unconjugated
Tested Applications	ELISA, FC, IHC
Immunogen	Purified recombinant fragment of human CSF1R (AA: 344-497) expressed in E. Coli.
Preservatives	Purified antibody in PBS with 0.05% sodium azide
Concentration	1mg/ml
Storage	4°C; -20°C for long term storage. Avoid freeze/thaw cycles.
Note	For research use only
Isotype	Mouse IgG2b
Clonality	Monoclonal
MW	108kDa
Entrez	1436
Dilution Range	IHC: 1/200 - 1/1000; RCM: 1/200 - 1/400; ELISA: 1/10000
Expiration Date	12 months from date of receipt.



Line graph illustrates about the Ag-Ab r...



Flow cytometric analysis of HepG2 cells ...



Immunohistochemical analysis of formalin...