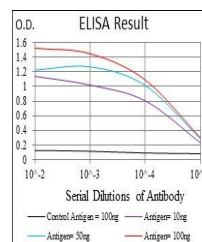


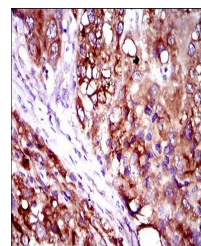
## Product Datasheet

### SLC27A2 Antibody (orb153480)

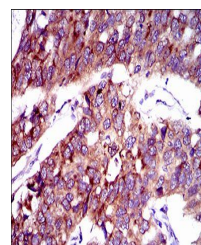
<b>Description</b>	Mouse monoclonal antibody to SLC27A2
<b>Species/Host</b>	Mouse
<b>Reactivity</b>	Human
<b>Conjugation</b>	Unconjugated
<b>Tested Applications</b>	ELISA, IHC
<b>Immunogen</b>	Purified recombinant fragment of human SLC27A2 (AA: 346-405) expressed in E. Coli.
<b>Preservatives</b>	Purified antibody in PBS with 0.05% sodium azide
<b>Concentration</b>	1mg/ml
<b>Storage</b>	4°C; -20°C for long term storage. Avoid freeze/thaw cycles.
<b>Note</b>	For research use only
<b>Isotype</b>	Mouse IgG1
<b>Clonality</b>	Monoclonal
<b>MW</b>	70.3kDa
<b>Entrez</b>	<b>11001</b>
<b>Dilution Range</b>	IHC: 1/200 - 1/1000; ELISA: 1/10000
<b>Expiration Date</b>	12 months from date of receipt.



Line graph illustrates about the Ag-Ab r...



Immunohistochemical analysis of formalin...



Immunohistochemical analysis of formalin...