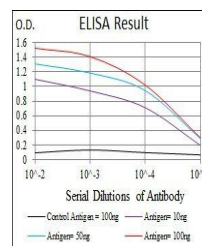


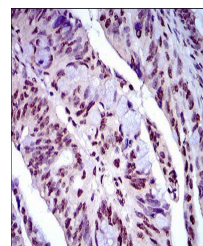
Product Datasheet

NAPSA Antibody (orb153470)

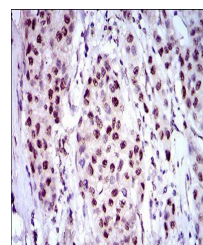
Description	Mouse monoclonal antibody to NAPSA
Species/Host	Mouse
Reactivity	Human, Rat
Conjugation	Unconjugated
Tested Applications	ELISA, IHC, WB
Immunogen	Purified recombinant fragment of human NAPSA (AA: 20-158) expressed in E. Coli.
Preservatives	Purified antibody in PBS with 0.05% sodium azide
Concentration	1mg/ml
Storage	4°C; -20°C for long term storage. Avoid freeze/thaw cycles.
Note	For research use only
Isotype	Mouse IgG1
Clonality	Monoclonal
MW	45.4kDa
Entrez	9476
Dilution Range	WB: 1/500 - 1/2000; IHC: 1/200 - 1/1000; ELISA: 1/10000
Expiration Date	12 months from date of receipt.



Line graph illustrates about the Ag-Ab r...



Immunohistochemical analysis of formalin...



Immunohistochemical analysis of formalin...