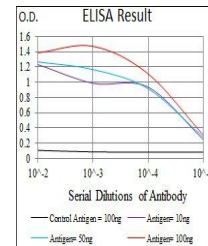


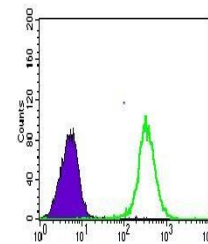
Product Datasheet

SLC2A4 Antibody (orb153402)

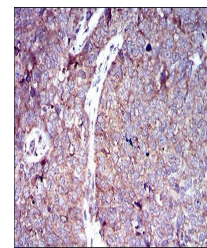
Description	Mouse monoclonal antibody to SLC2A4
Species/Host	Mouse
Reactivity	Human, Mouse
Conjugation	Unconjugated
Tested Applications	ELISA, FC, ICC, IHC
Immunogen	Purified recombinant fragment of human SLC2A4 (AA: 224-353) expressed in E. Coli.
Preservatives	Purified antibody in PBS with 0.05% sodium azide
Concentration	1mg/ml
Storage	4°C; -20°C for long term storage. Avoid freeze/thaw cycles.
Note	For research use only
Isotype	Mouse IgG2b
Clonality	Monoclonal
MW	54.8kDa
Entrez	6517
Dilution Range	IHC: 1/200 - 1/1000; ICC: 1/200 - 1/1000; RCM: 1/200 - 1/400; ELISA: 1/10000
Expiration Date	12 months from date of receipt.



Line graph illustrates about the Ag-Ab r...



Flow cytometric analysis of HeLa cells I...



Immunohistochemical analysis of formalin...