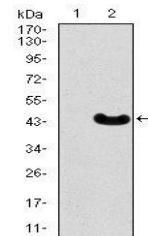


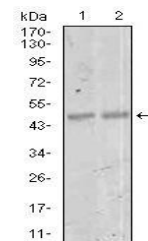
Product Datasheet

MEF2C Antibody (orb153396)

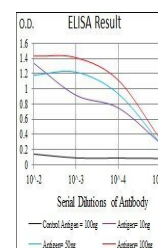
Description	Mouse monoclonal antibody to MEF2C
Species/Host	Mouse
Reactivity	Human, Mouse
Conjugation	Unconjugated
Tested Applications	ELISA, FC, IHC, WB
Immunogen	Purified recombinant fragment of human MEF2C (AA: 1-125) expressed in E. Coli.
Preservatives	Purified antibody in PBS with 0.05% sodium azide
Concentration	1mg/ml
Storage	Maintain refrigerated at 2-8°C for up to 2 weeks. For long term storage store at -20°C in small aliquots to prevent freeze-thaw cycles.
Note	For research use only
Isotype	Mouse IgG1
Clonality	Monoclonal
MW	51.2kDa
Entrez	4208
Dilution Range	WB: 1/500 - 1/2000; IHC: 1/200 - 1/1000; RCM: 1/200 - 1/400; ELISA: 1/10000
Expiration Date	12 months from date of receipt.



Western blot analysis of HEK293 (Lane 1)...



Western blot analysis of NIH3T3 (Lane 1)...



Line graph illustrates about the Ag-Ab r...