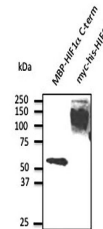


## Product Datasheet

### HIF1 alpha antibody (orb153330)

<b>Description</b>	Goat polyclonal to alpha subunit of transcription factor hypoxia-inducible factor-1 (HIF-1), which i...
<b>Species/Host</b>	Goat
<b>Reactivity</b>	Bovine, Canine, Donkey, Equine, Feline, Gallus, Goat, Guinea pig, Hamster, Human, Mouse, Other, Porcine, Primate, Rabbit, Rat, Sheep
<b>Conjugation</b>	Unconjugated
<b>Tested Applications</b>	WB
<b>Immunogen</b>	Purified recombinant peptide derived from within residues 780 aa to the C-terminus of human HIF1a produced in E. coli.
<b>Target</b>	HIF1a
<b>Preservatives</b>	PBS, 20% glycerol and 0.05% sodium azide
<b>Form/Appearance</b>	Polyclonal antibody supplied as a 200 µl (3 mg/ml) aliquot in PBS, 20% glycerol and 0.05% sodium azide. This antibody is epitope-affinity purified from goat antiserum.
<b>Concentration</b>	3 mg/ml
<b>Storage</b>	Store at -20°C for long-term storage. Store at 2-8°C for up to one month.
<b>Note</b>	For research use only
<b>Application notes</b>	The antibody solution should be gently mixed before use.
<b>Isotype</b>	IgG
<b>Clonality</b>	Polyclonal
<b>Dilution Range</b>	WB:1:500-1:2,000
<b>Expiration Date</b>	12 months from date of receipt.



Western blot analysis of 293 cell line  
I...